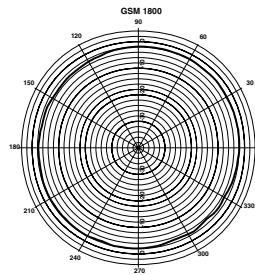
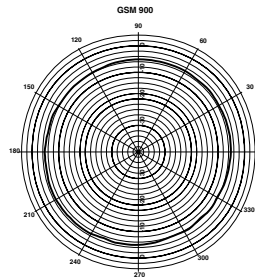


The bloomice CASCO GPS / GSM antenna is a rugged, robust versatile body mounted antenna designed for use in challenging environments where excellent performance across all bands is essential.

The GPS & QUADBAND GSM elements are embedded within a rugged ABS housing. An M20 through bolt provides an excellent electrical and mechanical connection.

The bloomice CASCO GPS / GSM antenna is perfectly suited for use within the automotive industry, transportation sector, marine environment and with any externally sited data transfer application.

PRODUCT OVERVIEW



RADIATION PATTERN

GPS Information

Frequency	1574.42MHz (+/- 1.023MHz)
Impedance	50Ω
Power (Max.)	125mW
Amplification (LNA)	26dB @ 3.3v / 28dB @ 5v
Current Consumption	8-15mA
Operational Voltage	2.7v to 5.5v
Polarisation	RHCP

GSM Information

Polarisation	Linear
Frequency	850MHz, 900MHz, 1800MHz, 1900MHz, 2100MHz
Gain	2.14dBi
Power Handling	50w
Impedance	50Ω

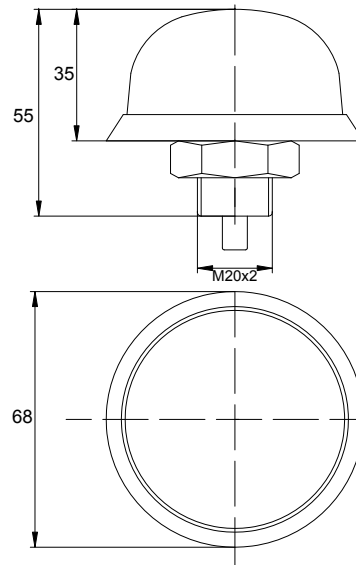
Physical Characteristics

Dimensions	As CAD drawing
Net Weight	125g
Operational Temperature	-40°C to +85°C
Humidity	100% @ 25°C
Connector	According to customer specification
Cable Type	RG174 Black
Cable Length	According to customer specification

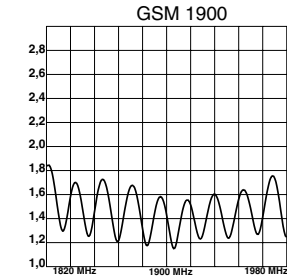
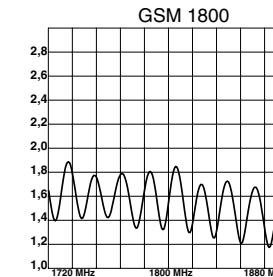
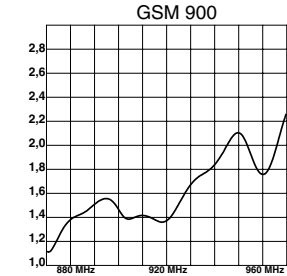
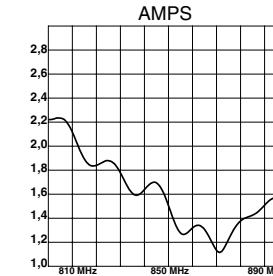
SPECIFICATION



PRODUCT PICTURE



CAD DRAWING



VSWR