



Datenblatt Datasheet

Low Profile Antenne Low Profile Antenna

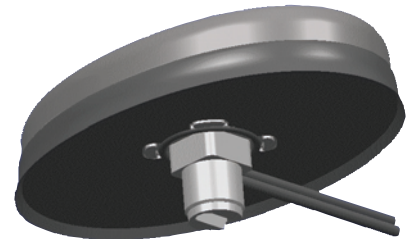
GPS 18 90 LP/S/...

Erz.-Nr. / Ord. code

920 062-...

GPS / CELLULAR

- Empfangsantenne für GPS-Satellitensignale zur Verarbeitung in Navigationssystemen, Flottenmanagementsysteme, Verkehrsführungssysteme und Fahrzeugortung.
In Kombination mit flacher Cellular-Telefonantenne
 - geringe Bauhöhe ca. 21 mm / 0.8 In.
 - Abdeckung europäischer und US-amerikanischer Cellular-Telefon-Frequenzen
 - Montage auf unterschiedlichsten Oberflächen (z.B. Kunststoff, Metall ...)
- *Reception antenna for GPS satellite signals for processing in navigation systems, fleet management systems, traffic guidance systems and vehicle location.
In combination with low profile cellular phone antenna.*
 - *Low body height ca. 21 mm / 0.8 In.*
 - *Coverage of European and American cellular phone frequencies*
 - *Mounting on several surfaces (e.g. plastics, metal ...)*



Änderungen vorbehalten / Subject to alterations

Technische Daten / Technical data

Abmessungen / Dimensions	100 mm x 66 mm x 21 mm / 3.9 x 2.6 x 0.8 In.	
Gewicht / Weight	ca. 151 g / 0.35 oz.	
Temperaturbereich / Temperature range	-30 – +80°C / -22 – +176 °F	
Schutzklasse / Protection class	IP66 (acc. IEC 60529)	
GPS		
Frequenzbereich / Frequency range	1,57542 GHz ± 1.023 MHz, (L1-band)	
Impedanz / Impedance	50 Ohm	
VSWR	≤ 2,0	
Gewinn / Gain	2 dBic	
Verstärkung / Amplification	27 ± 3 dB	
Rauschmaß / Noise figure (50 Ohm)	≤ 2,5 dB	
Betriebsspannung / Voltage supply	3 – 5,5 VDC (ferngespeist, remote fed)	
Stromaufnahme / Current consumption	≤ 25 mA bei/at 5 V	
Cellular		
Frequenzbereich / Frequency range	AMPS:	824 – 894 MHz
	GSM 900:	880 – 960 MHz
	GSM 1800:	1710 – 1880 MHz
	GSM 1900:	1850 – 1990 MHz
	UMTS:	1920 – 2170 MHz
Impedanz / Impedance	50 Ohm	
VSWR	≤ 2,0	
Gewinn / Gain	0 dBi	
Belastbarkeit / Load capacity	max.	10 W gepulst, pulsed acc. GSM standard
Kabel und Anschluss / Cable and Connector		
Kabeltyp / Cable type	RG 174	
Kabellänge / Cable length	...SMB/FME (920 062-001):	GPS: 310 +30 mm / 12.2 +1.2 In. Cellular: 370 +30 mm / 14.6 +1.2 In.
	...FAKRA/3.0 (920 062-005):	GPS: 3000 +30 mm / 118.1 +1.2 In. Cellular: 3000 +30 mm / 118.1 +1.2 In.
Anschluss / Connector	...SMB/FME (920 062-001):	GPS: SMB female Cellular: FME male
	...FAKRA/3.0 (920 062-005):	GPS: FAKRA female, Code C Cellular: FAKRA female, Code D



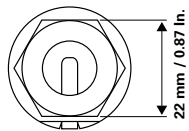
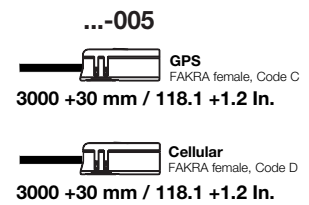
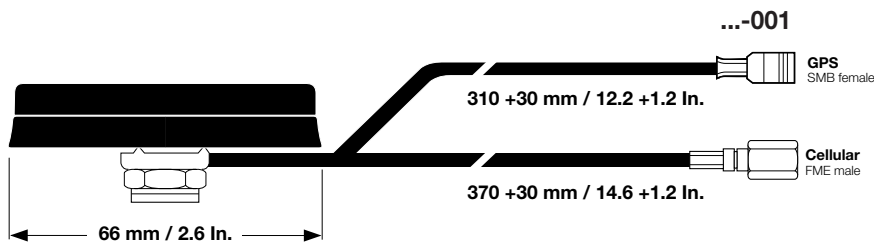
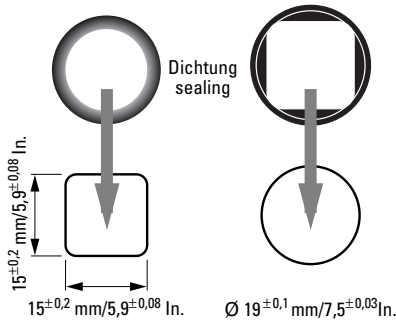
Datenblatt Datasheet

GPS 18 90 LP/S/...

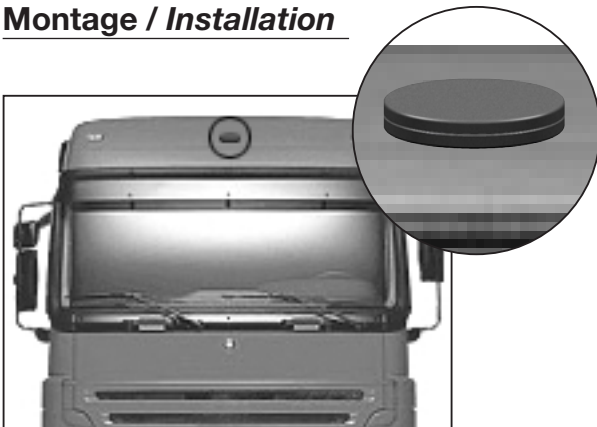
Erz.-Nr. / Ord. code

920 062-...

Änderungen vorbehalten / Subject to alterations



Montage / Installation





Datenblatt Datasheet

Änderungen vorbehalten /
Subject to alterations

Montage auf Metallplatte /
Installation on groundplane

GPS 18 90 LP/S/...

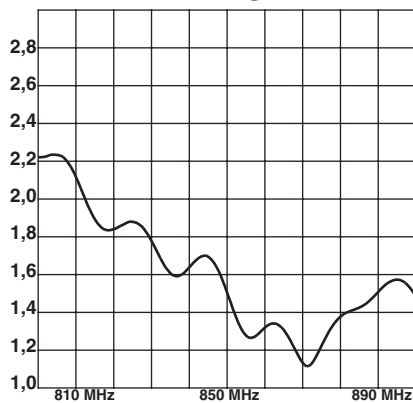
Erz.-Nr. / Ord. code

920 062-...

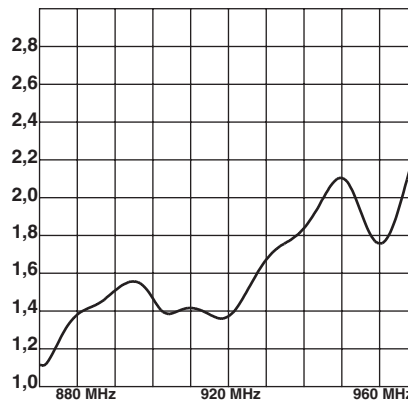
Antennendiagramme Antenna diagrams

Typisches VSWR / Typical VSWR

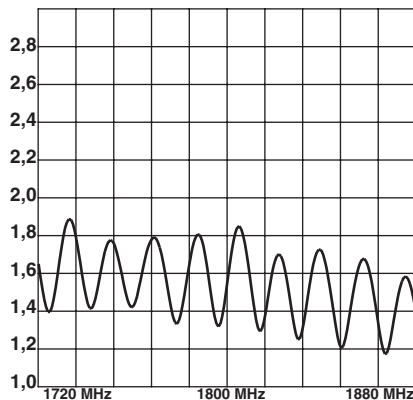
AMPS



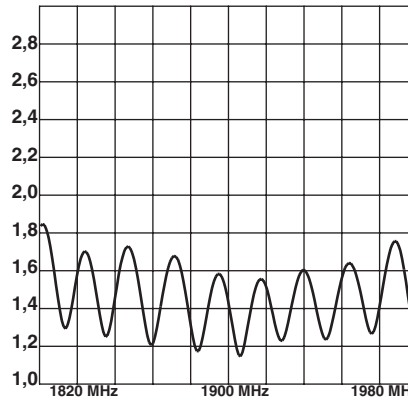
GSM 900



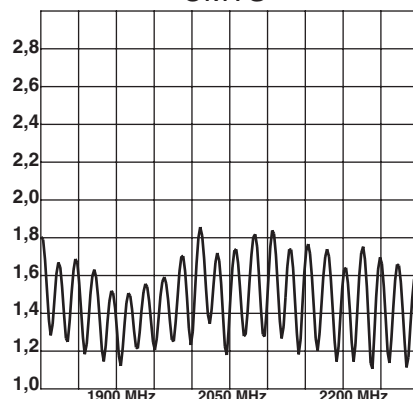
GSM 1800



GSM 1900



UMTS





Datenblatt Datasheet

Änderungen vorbehalten / *Subject to alterations*

GPS 18 90 LP/S/...

Erz.-Nr. / Ord. code

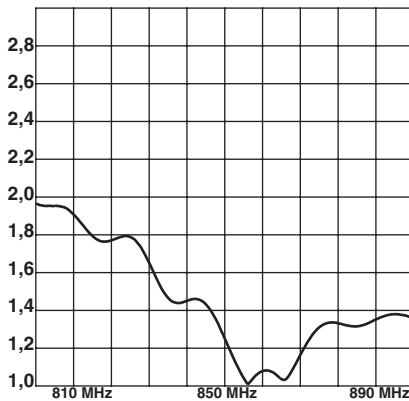
**Montage auf nicht leitendem Untergrund /
Installation on non conductable plane**

920 062-...

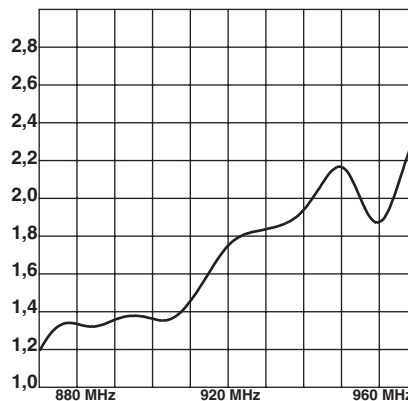
Antennendiagramme *Antenna diagrams*

Typisches VSWR / *Typical VSWR*

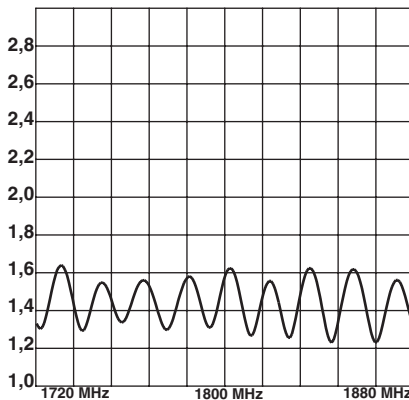
AMPS



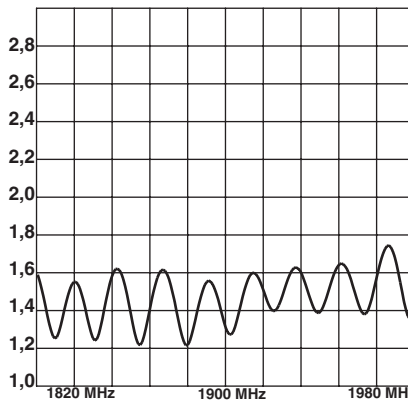
GSM 900



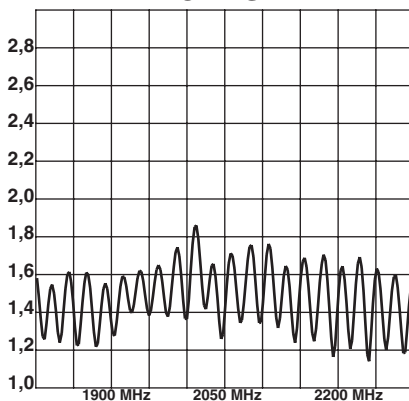
GSM 1800



GSM 1900



UMTS





Datenblatt Datasheet

Änderungen vorbehalten / *Subject to alterations*

GPS 18 90 LP/S/...

**Montage zwischen 2 Metallstreben /
Installation between 2 metal bars**

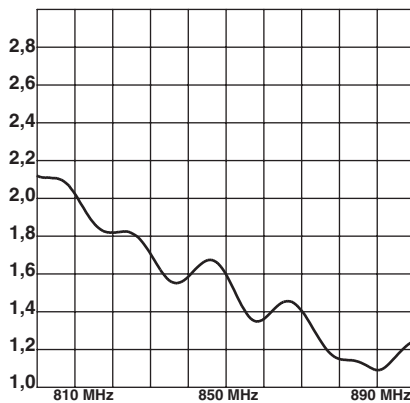
Erz.-Nr. / Ord. code

920 062-...

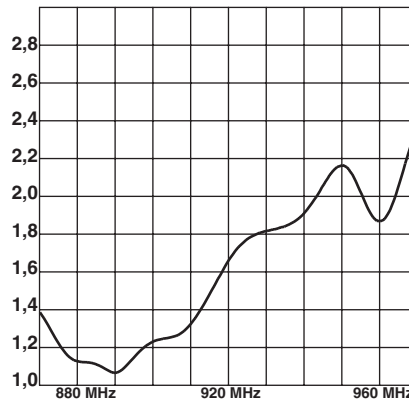
Antennendiagramme *Antenna diagrams*

Typisches VSWR / *Typical VSWR*

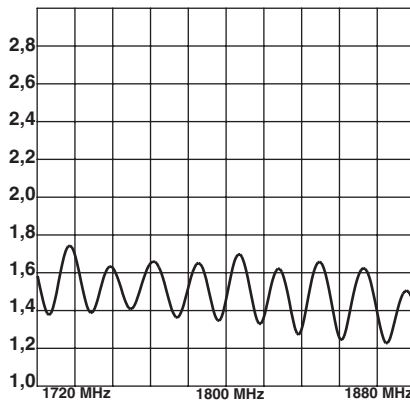
AMPS



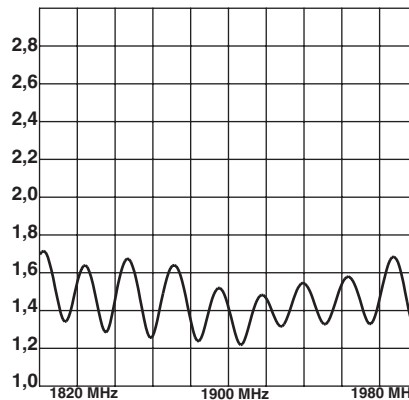
GSM 900



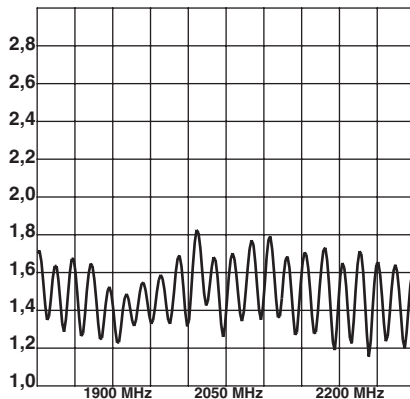
GSM 1800



GSM 1900



UMTS



Datenblatt Datasheet

GPS 18 90 LP/S/...

Erz.-Nr. / Ord. code

920 062-...

Änderungen vorbehalten / *Subject to alterations*

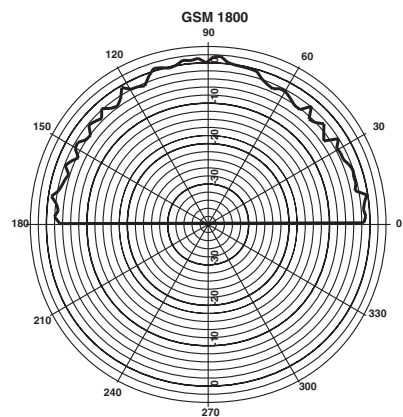
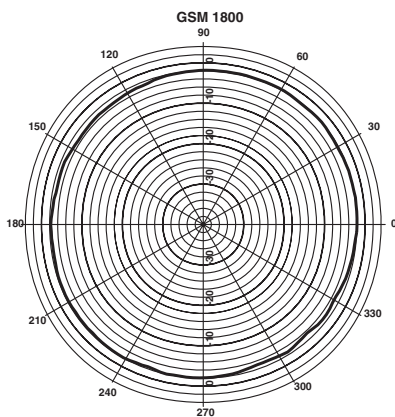
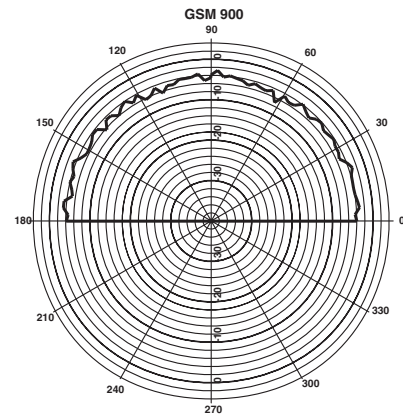
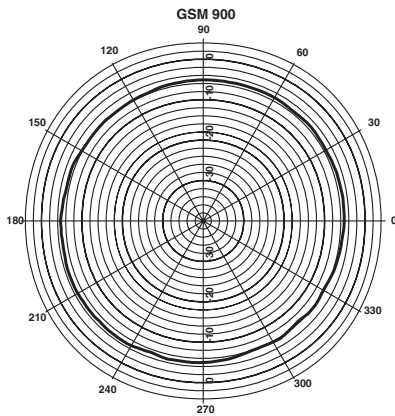
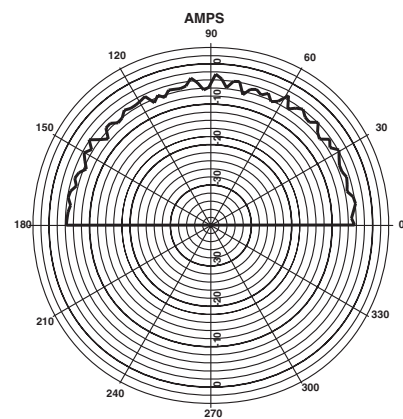
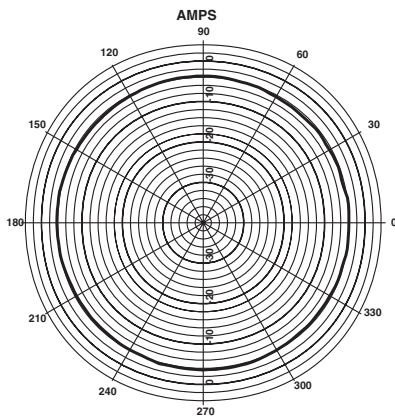
Antennendiagramme *Antenna diagrams*

Antennendiagramme *Antenna diagrams*

Typisches Strahlungsdiagramm / *Typical radiation pattern*

horizontal / Azimuth

vertikal / Elevation





Datenblatt Datasheet

GPS 18 90 LP/S/...

Erz.-Nr. / Ord. code

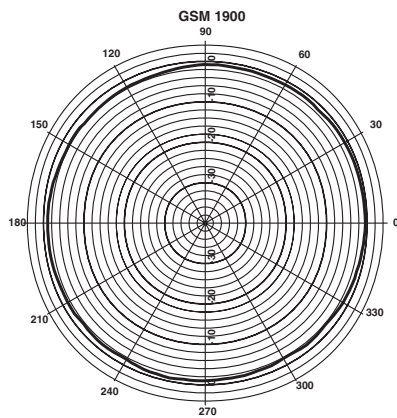
920 062-...

Änderungen vorbehalten / *Subject to alterations*

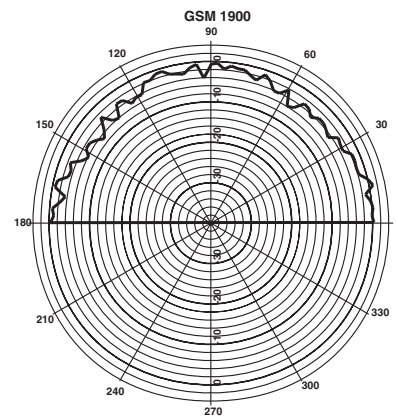
Antennendiagramme Antenna diagrams

Typisches Strahlungsdiagramm / *Typical radiation pattern*

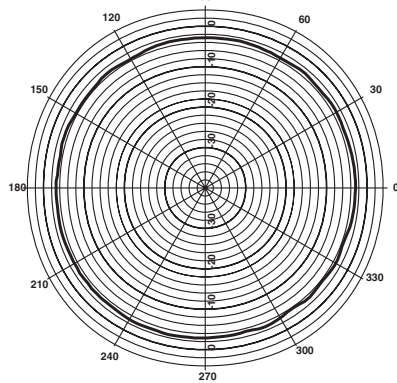
horizontal / Azimuth



vertikal / Elevation



UMTS



UMTS

