



Datenblatt *Datasheet*

Dachantenne *Roof Mount Antenna*

Cellular

- Montage von innen und außen
- Abnehmbarer Strahler
- *Installation from inside or outside*
- *Removable mast*

MCA 18 90 80

Erz.-Nr. / *Ord. code*

921 746-003



Änderungen vorbehalten / *Subject to alterations*

Technische Daten / *Technical data*

Abmessungen / <i>Dimensions</i>	Ø 33 mm x 89 mm / 1.29 x 3.50 In.	
Gewicht / <i>Weight</i>	41 g / 1.45 oz	
Temperaturbereich / <i>Temperature range</i>	-40° C – + 80° C / -40° F – +176° F	
Schutzklasse / <i>Protection class</i>	IP66 (acc. IEC 60529)	
Cellular		
Frequenzbereich / <i>Frequency range</i>		
Senden / <i>Emission (TX)</i>		
VSWR ≤ 1,5	AMPS:	824 – 894 MHz
	GSM 900:	880 – 915 MHz
	GSM 1800:	1710 – 1785 MHz
	GSM 1900:	1850 – 1910
	UMTS:	1900 – 2025 MHz
Empfangen / <i>Reception (RX)</i>		
VSWR ≤ 2,0	AMPS:	869 – 894 MHz
	GSM 900:	925 – 960 MHz
	GSM 1800:	1805 – 1880 MHz
	GSM 1900:	1930 – 1990 MHz
	UMTS:	2110 – 2170 MHz
Impedanz / <i>Impedance (nominal)</i>	50 ohms	
Gewinn / <i>Gain</i>	GSM:	0 dB (5.1 dBi)
Belastbarkeit / <i>Load capacity</i>	max.	8 W gepulst, <i>pulsed acc.</i> GSM standard
Anschluss / <i>Connector</i>	FME male	



Datenblatt Datasheet

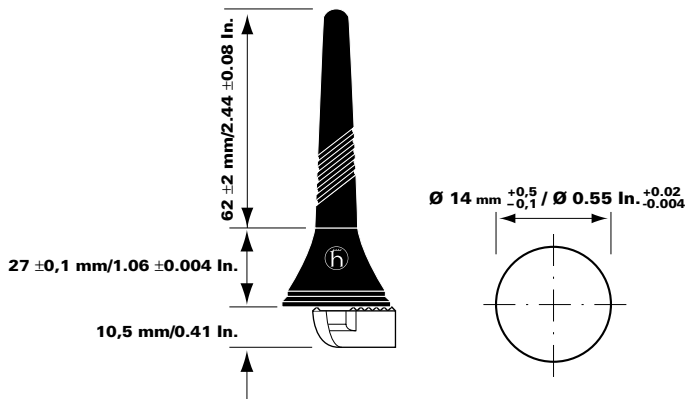
MCA 18 90 80

Erz.-Nr. / Ord. code

921 746-003

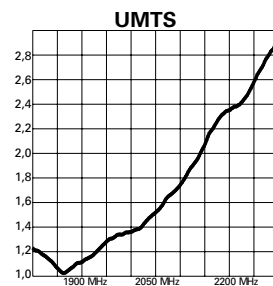
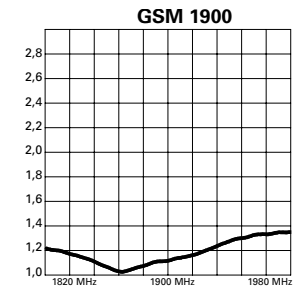
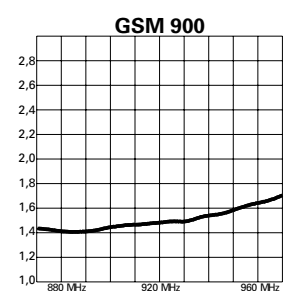
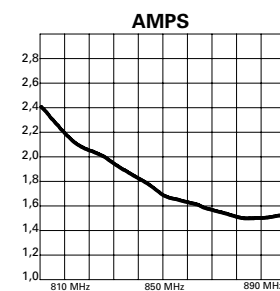
Änderungen vorbehalten / Subject to alterations

Technische Zeichnungen Technical drawings



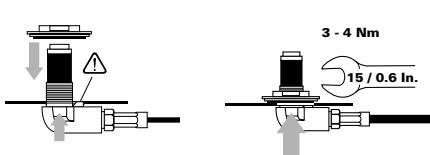
Antennendiagramme Antenna diagrams

Typisches VSWR / Typical VSWR

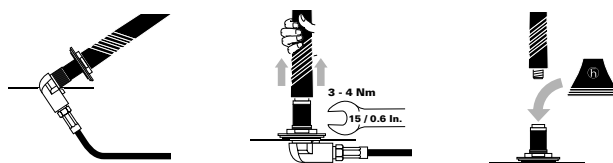


Montage / Installation

von unten / from below



von aussen / from outside



Typisches Strahlungsdiagramm (H-Ebene)
Typical radiation pattern (H-plane)

